



UTG RECON 360

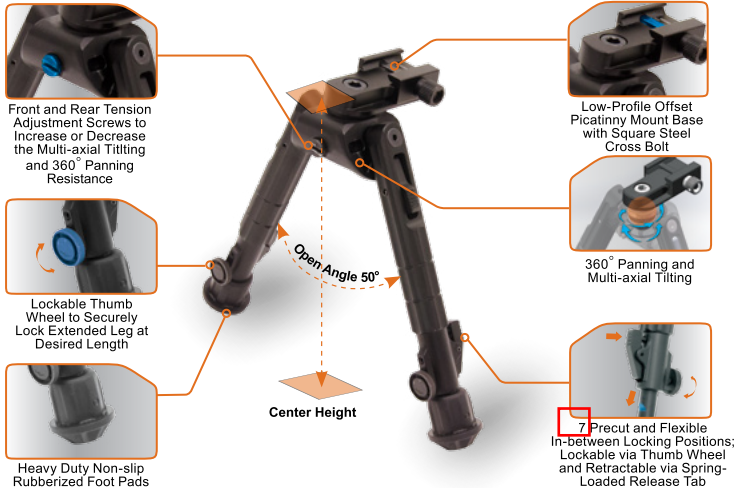
BIPOD

OWNER'S MANUAL

For Model: TL-BP01/TL-BP02/TL-BP03

U.S. PATENT PENDING

MUB021011509



Front and Rear Tension Adjustment Screws to Increase or Decrease the Multi-axial Tilting and 360° Panning Resistance

Low-Profile Offset Picatinny Mount Base with Square Steel Cross Bolt

Lockable Thumb Wheel to Securely Lock Extended Leg at Desired Length

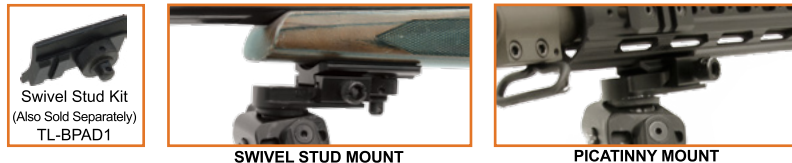
360° Panning and Multi-axial Tilting

Heavy Duty Non-slip Rubberized Foot Pads

Center Height

7 Precut and Flexible In-between Locking Positions; Lockable via Thumb Wheel and Retractable via Spring-Loaded Release Tab

Model	Stand Type	Center Height (Min - Max)	Leg Length (Min - Max)	Extendable Leg	Open Angle	Picatinny Mount	Swivel Stud Mount
TL-BP01	Rubberized	6.7" - 9.1"	7.4" - 10.2"	Yes	50°	Yes	Yes
TL-BP02	Rubberized	5.6" - 7"	5.5" - 7"	Yes	50°	Yes	Yes
TL-BP03	Rubberized	8.12" - 11.97"	8.15" - 12.43"	Yes	50°	Yes	Yes



SWIVEL STUD MOUNT

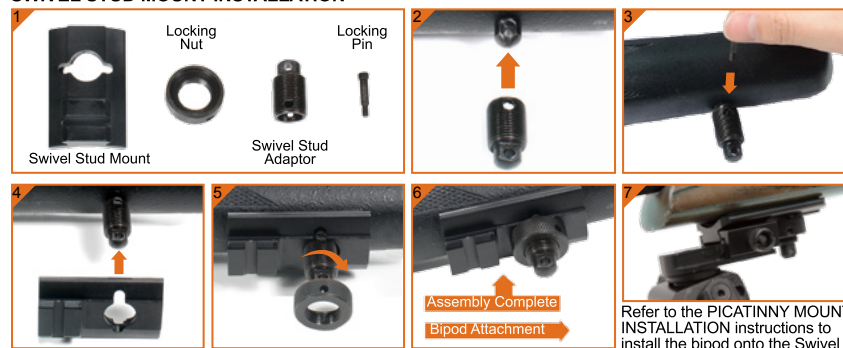
PICATINNY MOUNT

PICATINNY MOUNT INSTALLATION



Loosen the Thumb Nut and fit the Square Shaped Cross Bar into the Picatinny Slot. Tighten the Thumb Screw Securely.

SWIVEL STUD MOUNT INSTALLATION



Refer to the PICATINNY MOUNT INSTALLATION instructions to install the bipod onto the Swivel Stud Mount.

PANNING AND TILTING

Note: Do not completely remove the tension adjustment screws, this may cause damage to the bipod and void warranty coverage.



The inner smart spherical structure of the bipod base allows full 360 degree rotation of the firearm.

Multi-axial tilting allows total flexibility in front-back, sideways or any other directional movement of the firearm.

Use a flathead screw driver or coin to tighten or loosen the two tension adjustment screws evenly. Turn clockwise to tighten and counter clockwise to loosen.

BI-DIRECTIONAL FOLDING INSTRUCTION



Press and Hold Down the Posi-lock Tab located at the top of each leg.

Fold the bipod leg either forward or backward along any of the five position slots, releasing the Posi-lock Tab when the leg is in a desired slot to lock the leg in place.

LEG EXTENSION/RETRACTION INSTRUCTION



Verify that the Locking Thumb Wheel is in the unlocked position by fully turning the wheel counter clockwise.

Extend the bipod leg by pulling it downward out of its outer housing. Set it either at any of the 7 precut notches or anywhere in between. Tighten the Locking Thumb Wheel by turning it clockwise until snug.

To retract the bipod leg, loosen the Locking Thumb Wheel first. Next, press and hold down the Spring-Loaded Release Tab while simultaneously pushing the bipod leg upward back into its outer housing.