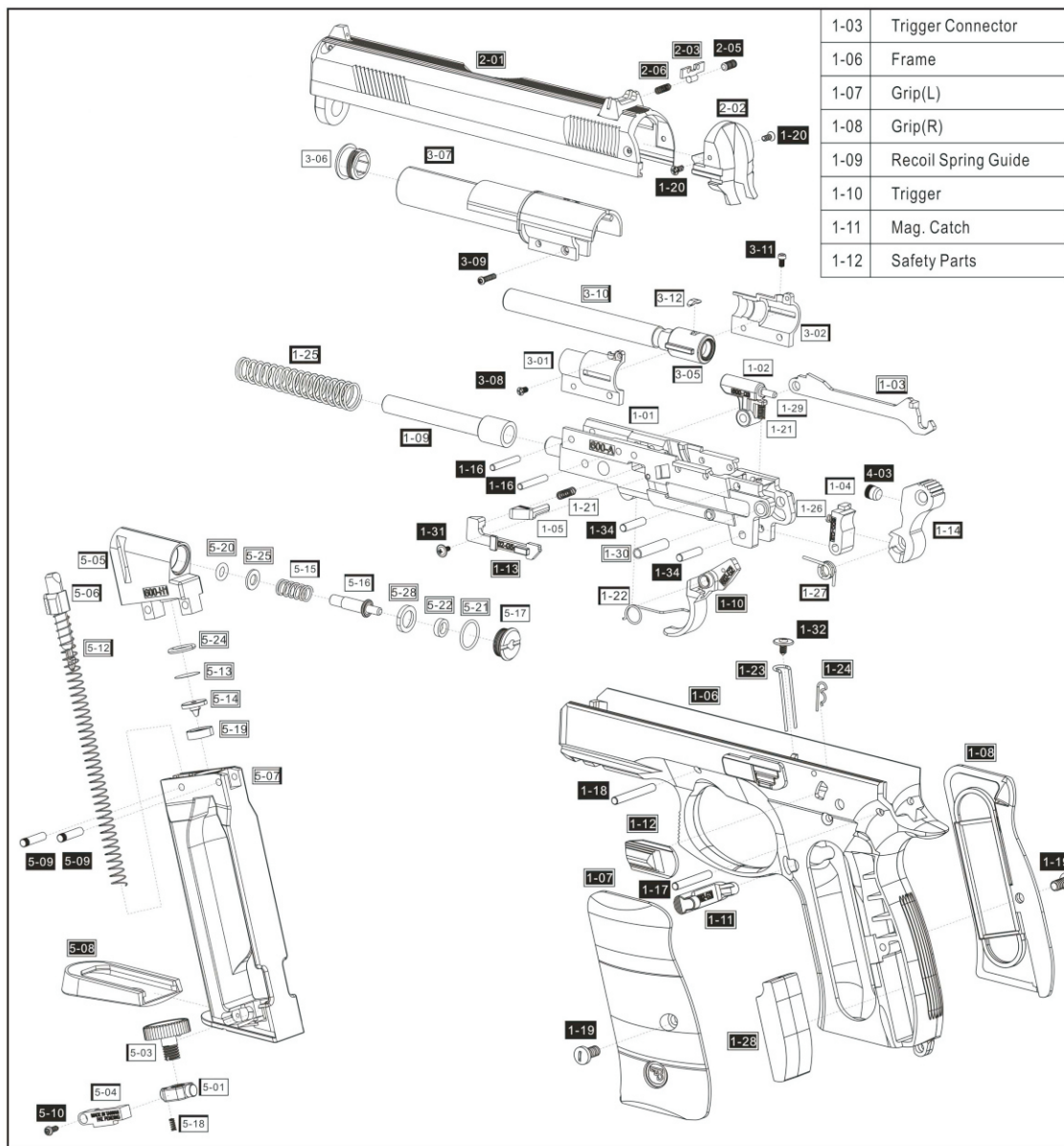


16200 CZ 75 Compact MS DT - CO₂, 4,5 mm



1-03	Trigger Connector	1	1-17	Axis	1	3-06	Barrel Tip	1
1-06	Frame	1	1-18	Axis	1	3-07	Outer Barrel	1
1-07	Grip(L)	1	1-19	Screw	2	3-08	Screw	1
1-08	Grip(R)	1	1-20	Screw	2	3-09	Screw	1
1-09	Recoil Spring Guide	1	1-22	Trigger Spring	1	3-10	Internal Barrel	1
1-10	Trigger	1	1-23	Mag. Catch Spring	1	3-11	Screw	1
1-11	Mag. Catch	1	1-24	Safety Parts Spring	1	3-12	Rubber Chip	1
1-12	Safety Parts	1	1-25	Recoil Spring	1	4	Hammer Combination	
			1-28	Heavy Weight	1	1-14	Hammer	1
			1-32	Screw	1	4-03	Attacked Block	1
			2-02	Slide Cover	1	5	Mag. Combination	
			1A	Structure Combination		5-01	Screw Seat	1
			1-01	Body Seat	1	5-03	Piercing Level Screw	1
			1-02	Hammer Stick	1	5-04	Spring Stopper	1
			1-04	Hammer Stopper	1	5-05	Chamber	1
			1-05	Safety Parts	1	5-06	BB Follower	1
			1-13	Safety Level	1	5-07	Mag. Body	1
			1-16	Axis	2	5-08	Mag. Base	1
			1-21	Safety Parts Spring	2	5-09	Axis	2
			1-26	Stopper Spring	1	5-10	Screw	1
			1-27	Hammer Spring	1	5-12	Mag. Spring	1
			1-29	Hammer Axis	1	5-13	Filter	1
			1-30	Axis	1	5-14	Piercer	1
			1-31	Screw	1	5-15	Valve Spring	1
			1-34	Axis	2	5-16	Valve	1
			2	Slide Combination		5-17	Chamber Cover	1
			2-01	Slide	1	5-18	Piercing Level Spring	1
			2-03	Rear Sight	1	5-19	Piercer Seal	1
			2-05	Screw	1	5-20	O Ring	1
			2-06	Rear Sight Spring	1	5-21	O Ring	1
			3	Internal Barrel Combination		5-22	Washer	1
			3-01	Barrel Seat(L)	1	5-24	O Ring	1
			3-02	Barrel Seat(R)	1	5-25	Washer	1
			3-05	BB Holder	1	5-28	Washer	1