



## EXPLODED VIEW & PARTS LIST

# MODEL C21 BB Repeater CO<sub>2</sub> Air Pistol



Manufacture Start Date: 04/26/08

Last Update / /1

CROSMAN CORPORATION  
7629 ROUTES 5 & 20  
BLOOMFIELD, NY 14469  
Phone: 1-800-724-7486  
Parts Order Fax: 585-657-5405

[www.crosman.com](http://www.crosman.com)

- This EVP and parts list is intended to be an informational guide in ordering parts. It is not instructional material and we therefore assume no responsibility for those who use the same without proper factory training.
- Please order by part number and description.
- Check or money order for the total price must accompany the order.
- For current prices contact Crosman Corporation at 1-800-724-7486 or visit our website [www.crosman.com](http://www.crosman.com)

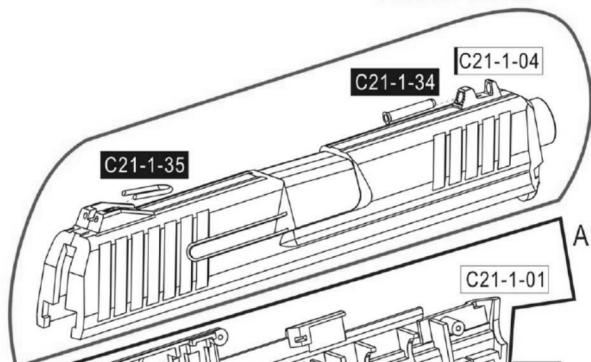
## C21 PARTS LIST

ONLY THE HIGHLIGHTED PARTS BELOW ARE AVAILABLE TO PURCHASE

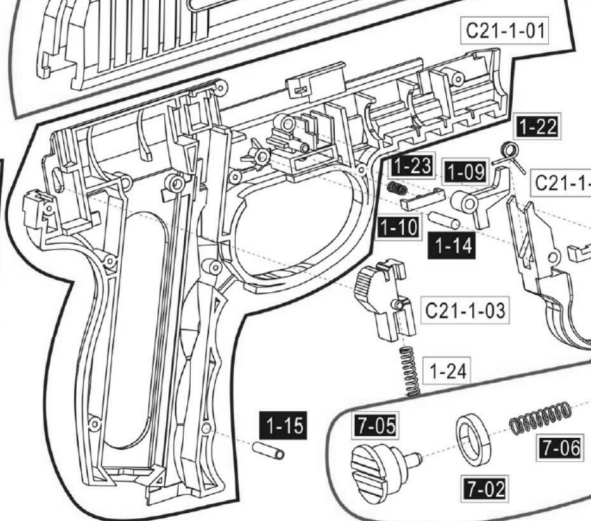
PART #	DESCRIPTION	QTY	PART #	DESCRIPTION	QTY
C21-1-01	FRAME - Left	1	3-02	BARREL SEAT – Right	1
C21-1-02	FRAME - Right	1	3-03	EJECTOR – Left	1
C21-1-03	HAMMER CATCH	1	3-04	EJECTOR – Right	1
C21-1-04	SLIDE	1	3-05	EJECTOR SPRING	1
C21-1-05	GRIP	1	3-06	INTERNAL BARREL	1
<b>C21-1-06</b>	<b>MAGAZINE CATCH</b>	<b>1</b>	3-08	SCREW	1
C21-1-07	TRIGGER	1	3-09	C WASHER	1
1-08	SAFETY	1	3-10	SCREW	2
1-09	SAFETY PARTS	1	<b>C11-005</b>	<b>CLIP (magazine) ASSY - (C21/C31)</b>	<b>1</b>
1-10	SAFETY SPRING SEAT	1	5-01	MAGAZINE BODY	1
1-11	RECOIL SPRING STOPPER	1	5-02	MAGAZINE COVER	1
1-12	FIXING GUIDE	1	5-03	BB FOLLOWER	1
1-13	BB HOUSING	1	5-04	BB GUIDE	1
1-14	AXIS	3	5-06	MAGAZINE SPRING	1
1-15	SPRING BAR	1	5-07	BB GUIDE SPRING	1
1-16	SCREW	7	<b>C21-7</b>	<b>VALVE ASSY</b>	<b>1</b>
1-18	SCREW	1	7-01	VALVE RING	1
1-19	RECOIL SPRING	1	<b>C21-7-02</b>	<b>VALVE SEAL</b>	<b>1</b>
1-20	BB STOPPER SPRING	1	<b>C21-7-03</b>	<b>PIERCER SEAL</b>	<b>1</b>
1-21	FIXING GUIDE SPRING	1	<b>C21-7-04</b>	<b>VALVE CHAMBER</b>	<b>1</b>
1-22	TRIGGER SPRING	1	7-05	VALVE COVER	1
1-23	SAFETY SPRING	2	7-06	VALVE SPRING	1
1-24	HAMMER CATCH SPRING	1	7-07	VALVE	1
1-25	ATTACHED BLOCK	1	7-08	COPPER RING	1
1-26	BB STOPPER	1	7-09	FILTER	1
<b>C21-1-34</b>	<b>FRONT FIBER OPTIC</b>	<b>1</b>	7-10	PIERCER	1
C21-1-35	U TYPE FIBER OPTIC	1	7-11	FIXING RING	1
8-02	CO2 CARTRIDGE HOUSE	1	8A	KNOB COMBINATION	1
3-01	BARREL SEAT – Left	1			

# C21

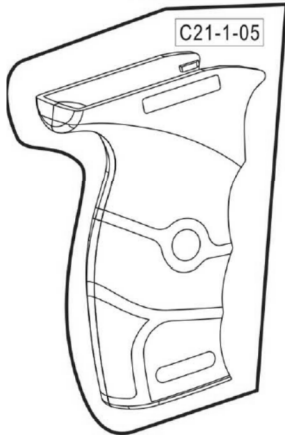
ASSM. C21.2



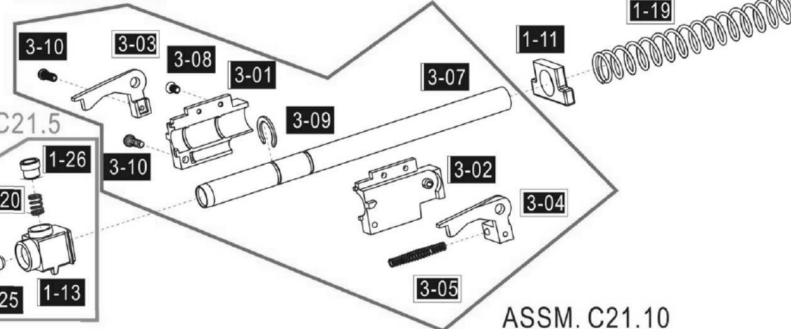
ASSM. C21.3



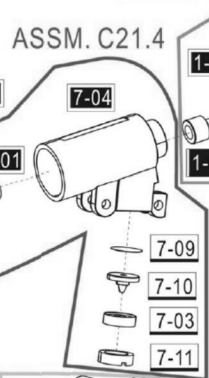
ASSM. C21.1



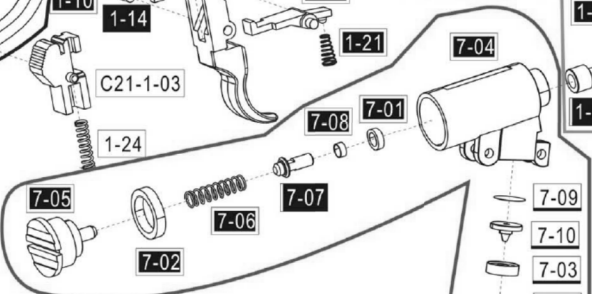
ASSM. C21.6



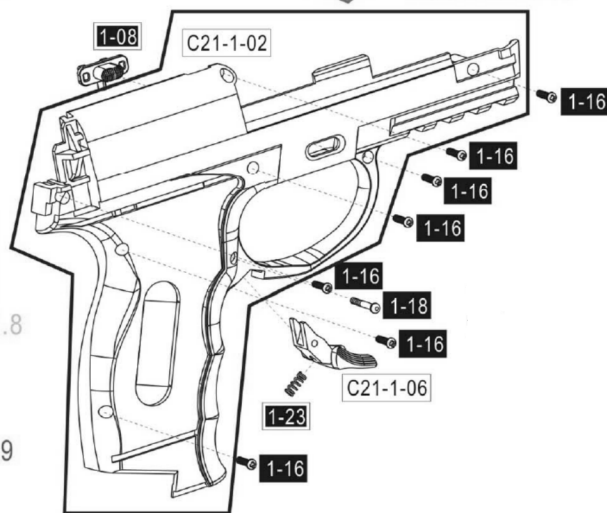
ASSM. C21.5



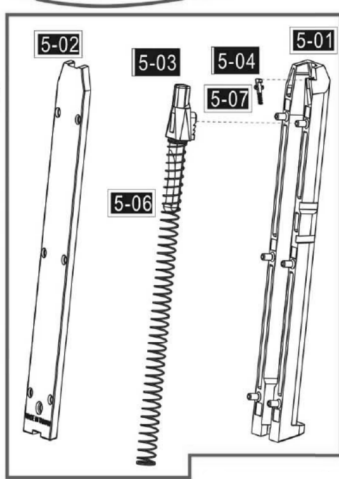
ASSM. C21.4



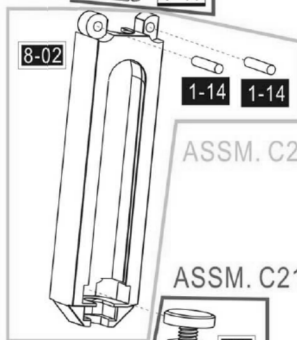
ASSM. C21.10



ASSM. C21.7



ASSM. C21.8



ASSM. C21.9

