

G&G 16 series instruction manual



G&G ARMAMENT
AIRSOFT GUNS & ACCESSORIES

WARNING !!

- This product is suggested for users 18 years or older.
- Wear goggles while shooting.
- Incorrect use may cause injury or death.
- Never point at humans and animals with the airsoft guns.
- Read the whole manual before using.
- Buyers and users should obey the laws and rules of the local authority.

CAUTION

1. Please select quality battery with the CE approval, to avoid any unnecessary damage on the product.
2. Please use either 8.4V or 9.6V battery, if different voltage used, it might damage the product.
3. Remove the battery from the product when it is not in use.
4. Do not wet nor incinerate the battery, nor to deform the terminal.

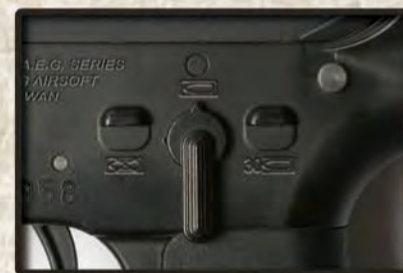
FIRING MODE & SAFETY



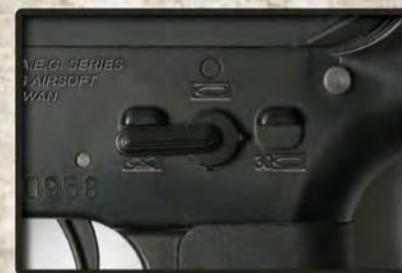
Product appearance depends on actual goods



SAFETY ON
The trigger cannot be pulled



SEMI AUTO
Single shot



FULL AUTO
Automatic firing



Hi-Cap 450R Magazine

BATTERY SETTING



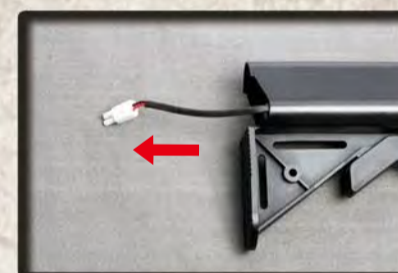
1. Charge up the battery.
2. Charging will be completed after 3 hours.



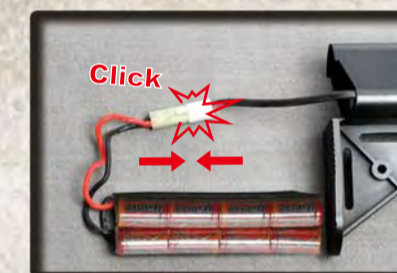
Pull out the butt plate from upper part.



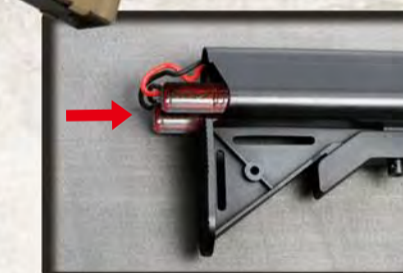
Take out the battery stop.



Pull out the wire connector.



Connect battery plug with the connector until you heard a click sound.



Insert the battery into stock.



Reinstall the battery cover and butt plate.

SETTING MAGAZINE

CAUTION

It is strongly recommended the use of G&G BB pellets only. Using low quality BB pellets will damage the product and void warranty.



Open the cover of magazine.



Load G&G 5.95mm BB pellets into the magazine.



Close the cover plate then turn the gear until the sound changes.



Insert the magazine until you heard a click sound.

HOP-UP ADJUSTMENT

CAUTION

Do not catch your fingers in the dummy bolt. Never hold the gun sideways as the BB pellets will curve right or left.



Too much Hop-up. (Turn the adjust lever toward Normal)

Best Direction.

Not enough Hop-up. (Turn the adjust lever toward Hop)
or Too much Hop-up. (Turn the adjust lever toward Normal)

WWW.GUAY2.COM Printed in Taiwan
Manufactured by G&G Armament





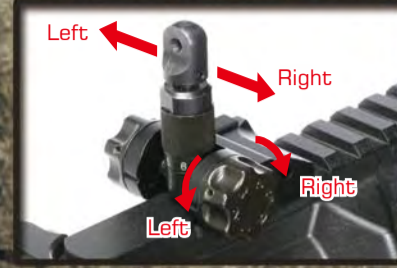
GC16 series instruction manual

WARNING !!

- This product is suggested for users 18 years or older.
- Wear goggles while shooting.
- Incorrect use may cause injury or death.
- Never point at humans and animals with the airsoft guns.
- Read the whole manual before using.
- Buyers and users should obey the laws and rules of the local authority.

CAUTION
Keep the selector on Safe mode until you are actually ready to shoot.

Windage adjustment knob Elevation adjustment knob



REAR SIGHT ADJUSTMENT

For rear sight left-right adjustment. Turning clockwise. Turning counter-clockwise more the pellet hitting to the right.

For rear sight up-down. Turning clockwise: Raise the pellet hitting point. Turning counter-clockwise: Lower the pellet hitting point.



SPECIAL SHOOTING
Used for precision firing.



COMMON SHOOTING
Used for full automatic firing.



WINDAGE KNOB (left / right adjustment)
ELEVATION KNOB (up / down adjustment)

RETRACTABLE STOCK



Press the stock release lever to unlock.



Adjust the position (6 position).

MOVABLE PARTS

MAINTENANCE

RETRACTABLE STOCK



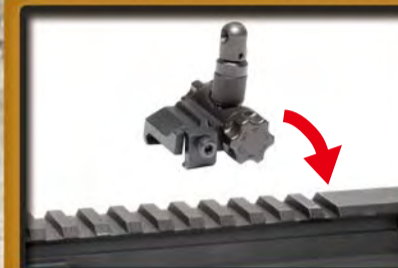
Press the stock release lever to unlock.



Adjust the position (6 position).

MOVABLE PARTS

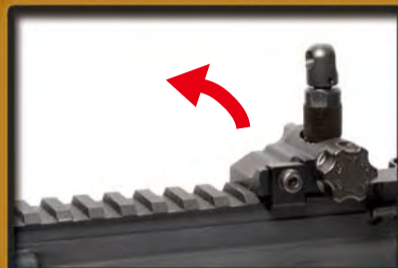
TROUBLE SHOOTING



Detachable rear sight.



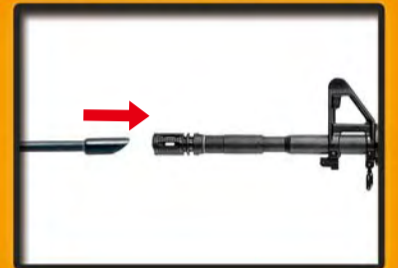
Unscrew the screw to disassemble the rear sight.



Take off the rear sight to install other accessories.



Remove the magazine.



Return the hop up dial to normal position and insert the cleaning rod from the lead edge of the inner barrel.



Be aware to have the rod facing down and reaching to the end, and remove clogged pellets.



Turn the knobs counterclockwise.



Take off carrying handle.



You can buy other accessories to install on the rail system.



The screw at bottom of the grip. Please use the screwdriver to adjust.



Check the wire set contact with motor.



Check the battery and connector.

PARTS LIST

- | | | | |
|---------|--------------------------------|---------|---------------------------|
| GC16-01 | Flash suppressor set | GC16-17 | Magazine catch set |
| GC16-02 | Rail system set | GC16-18 | Selector lever set |
| GC16-03 | Rear sight base set | GC16-19 | Stock washer |
| GC16-04 | Rear sight set | GC16-20 | Enhanced rod set |
| GC16-05 | Front barrel / Front sight set | GC16-21 | Hi-cap 450R magazine |
| GC16-07 | Barrel base set | GC16-22 | Lower receiver set |
| GC16-08 | Piston rod | GC16-23 | Trigger guard set |
| GC16-09 | Assist knob set | GC16-24 | Selector plate |
| GC16-10 | Inner barrel | GC16-25 | Rear frame lock pin set |
| GC16-11 | Upper receiver set | GC16-26 | Grip |
| GC16-12 | Charging handle set | GC16-27 | Motor set |
| GC16-13 | Hop-up set | GC16-28 | Motor cap |
| GC16-14 | Port cover set | GC16-29 | Extended stock set |
| GC16-15 | Front frame lock pin set | GC16-30 | Rear wire set |
| GC16-16 | Bolt catch set | GC16-31 | Gear box set |
| GC16-06 | Delta ring set | GC16-35 | Handguard set |
| GC16-32 | Carrying handle set | GC16-36 | Retractable stock set |
| GC16-33 | Rear outer barrel set | GC16-37 | Reinforced Grip for T4-18 |
| GC16-34 | Front outer barrel set | | |

G&G ARMAMENT

ADDRESS **Changhua** / No. 999, Zhonghua Rd., Shengang Township, Changhua County 50952, Taiwan
(Head Quarter)
Taipei / 11F-3, NO.27, Lane 169, Kangning St, Shijr City, Taipei County 22180, TAIWAN

E-Mail **Sales Department** / sales@guay2.com
b2b@guay2.com

Technology support Department / support@guay2.com

WEBSITE www.GUAY2.com

TEL **Changhua** / 886-4-798-9000
Taipei / 886-2-2692-2000

FAX **Changhua** / 886-4-798-9900
Taipei / 886-2-2692-4000



Please consult your dealer or G&G for overhaul maintenance and technical guidance.

You may purchase all of the groups' parts from G&G support Dep.
E-Mail: support@guay2.com

