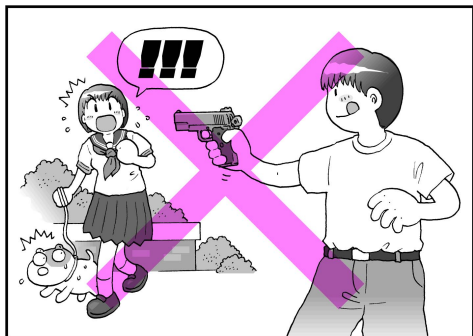
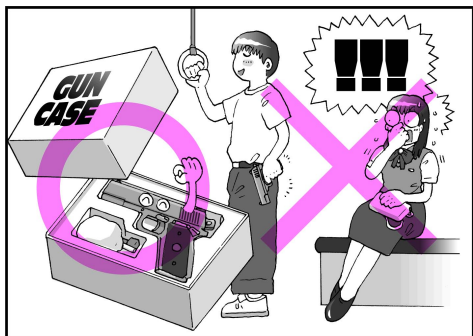


WARNING: BEFORE USAGE, THE INSTRUCTION MUSE BE READ.

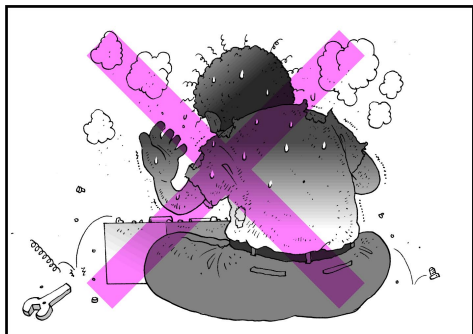
THANK YOU FOR PURCHASING. THE FOLLOWING ATTENTION POINTS AND INSTRUCTIONS MUST BE READ. SHOOTING WITHOUT CAUTION OR USED IMPROPERLY, BLINDNESS OR INJURIES COULD BE LEAD.



DO NOT POINT AT PEOPLE OR ANIMAL.



PLACE IN GUN CASE WHEN NOT IN USING OR TRANSPORTING



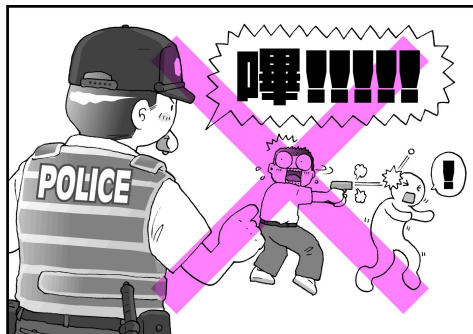
UNAUTHORIZED RECONSTRUCTION OF AIR SOFT GUN TO STRENGTHEN FIRING FUNCTION IS STRICTLY PROHIBITED.



GUN AND GAS MUST NOT BE PLACED IN AREA WHERE TEMPERATURE IS OVER 40 °C



DO NOT USE GAS WHICH PRESSURE IS OVER 12 Kgs/cm²



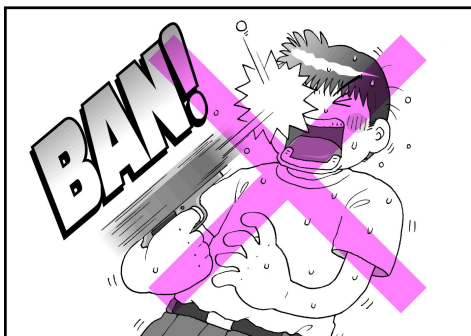
BE CAREFULL WHAT TARGET YOU SHOOT



EYE PROTECTION DEVICE MUST BE EQUIPPED



DO NOT LOAD ANYTHING BUT BB BULLETS.



DO NOT LOOK THROUGH THE BARREL



PLEASE SHOOT IN SAFE PLACE

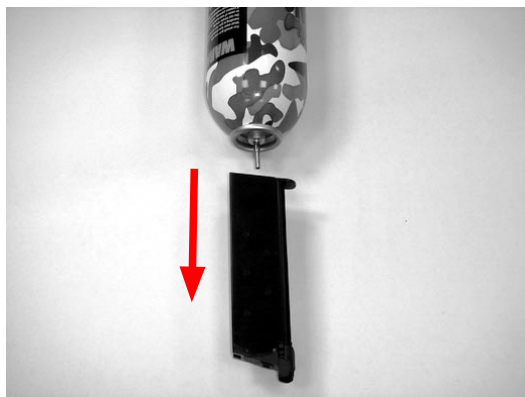
OPERATION

1.REMOVE THE MAGAZINE



PRESS MAGAZINE CATCH AND REMOVE MAGAZINE

2.FILLING GAS



FILL THE GAS BOTTLE TO THE MAGAZINE IN VERTICA DIRECTION.

3.LOAD BB BULLETS

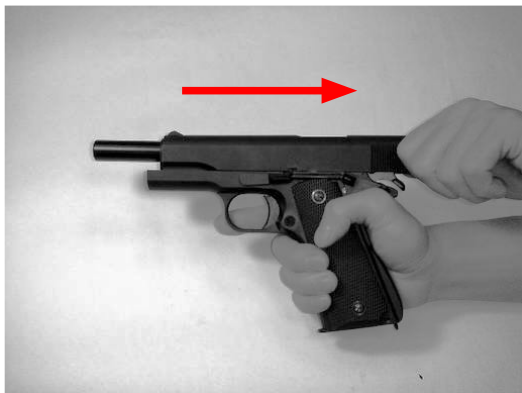


USE WRENCH TO HOLD THE FOLLOWER AND LOAD BULLETS

4.INSERT MAGAZINE



5.LOAD



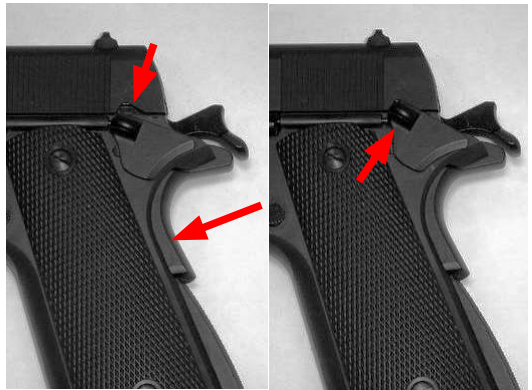
PULL THE SLIDE COMPLETELY TO THE REAR.

6.FIRE



PULL THE TRIGGER.

7.SAFETY



SAFETY OFF(READY FOR FIRE)

SAFETY ON

DISASSEMBLY

1 REMOVE THE SLIDE STOP

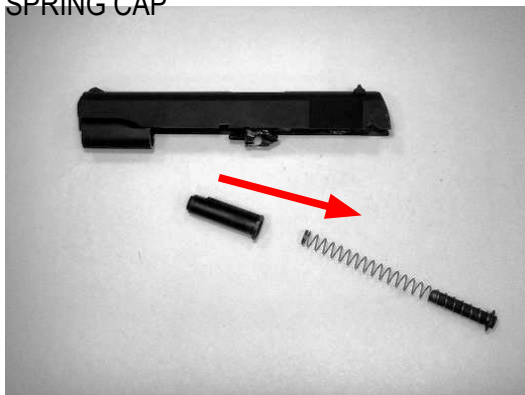


THE SLIDE REAR UNTIL THE TAKEDOWN NOTCH IS JUST ABOVE THE SLIDE STOP TAB AND REMOVE SLIDE STOP

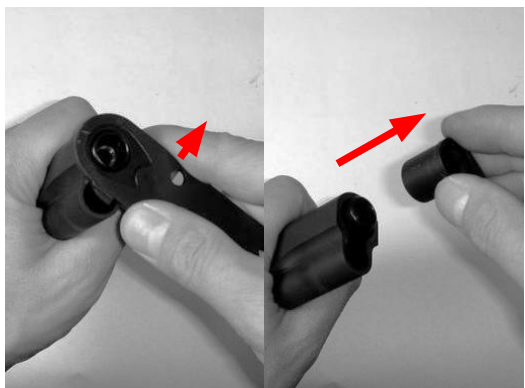
2.REMOVE THE SLIDE



3.REMOVE THE RECOIL SPRING AND SPRING CAP

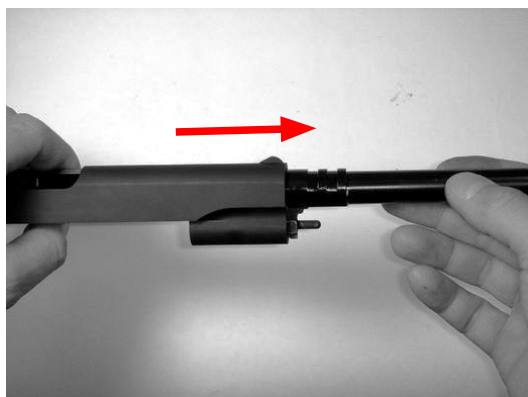


4.REMOVE THE BARREL BUSH AND BARREL



USE WRENCH TO ROTATE THE BARREL BUSH AND REMOVE IT

5.REMOVE THE BARREL



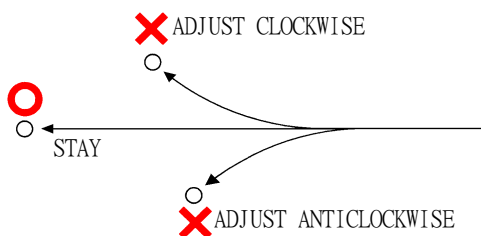
ASSEMBLY

REVERSE THE DISASSEMBLY ORDER
ADJUST TREJECTORY

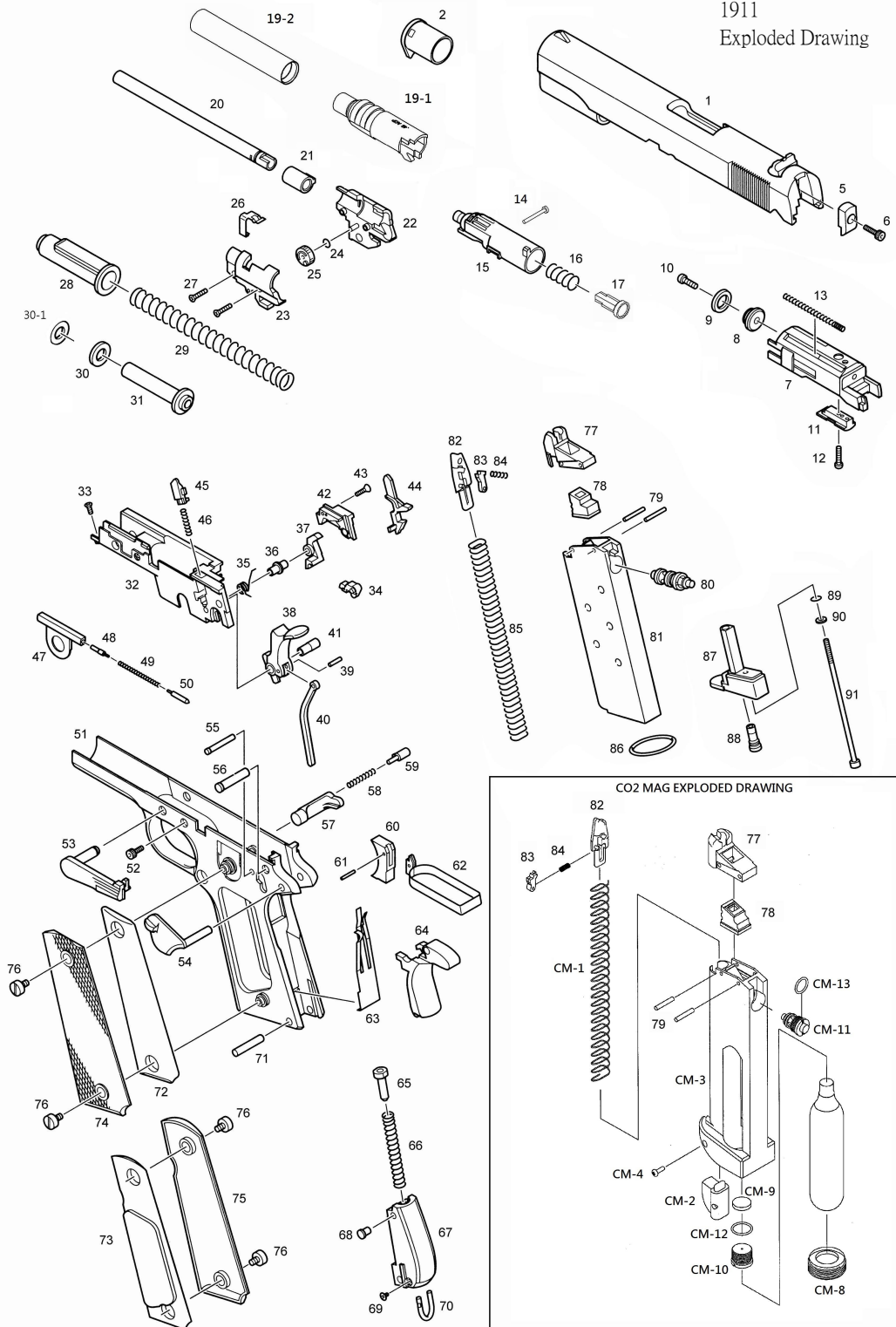


TWIST THE ADJUST DIAL TO ADJUST TEAJECTORY.

PLEASE ADJUST ACCORDING TO TREJECTORT



1911 Exploded Drawing



No.	Name of Part	Price	No.	Name of Part	Price
1	Slide	1600	51	Frame	2200
2	Barrel Bushing	120	52	Frame Screw	10
			53	Slide Stop	200
5	Firing Pin Stop	100	54	Safety	140
6	Firing Pin Stop Screw	20	55	Sear Pin	40
7	Cylinder	400	56	Hammer Pin	40
8	Ring Head	40	57	Magazine Catch	120
9	Ring	20	58	Magazine Catch Spring	10
10	Ring Head Screw	10	59	Magazine Catch Lock	30
11	Piston Part	30	60	Trigger	120
12	Piston Part Screw	10	61	Trigger Pin	10
13	Cylinder Return Spring	20	62	Trigger Bar	120
15	Cylinder	150	63	Sear Spring	100
16	Cylinder Valve Spring	20	64	Grip Safety	240
17	Cylinder Valve	20	65	Hammer Spring Plunger	30
18	Cylinder Valve Pin	20	66	Hammer Spring	70
19-1	Outter Barrel Chamber	300	67	Hammer Spring Housing	240
19-2	Outter Barrel	300	68	Plunger Stopper	40
20	Inner Barrel	180	69	Lanyard Loop Screw	10
21	Rubber Chamber	80	70	Lanyard Loop	50
22	Chamber Cover (Right)	140	71	Housing Pin	50
23	Chamber Cover (Left)	140	72	Grip Weight (Left)	100
24	O-Ring	10	73	Grip Weight (Right)	100
25	Adjust Dial	20	74	Grip (Left)	80
26	Adjust Lever	50	75	Grip (Right)	80
27	Chamber Cover Screw	10	76	Grip Screw	30
28	Recoil Plug	200	77	BB Lip	60
29	Recoil Spring	60	78	Magazine Gasket	80
30	Recoil Spring Pad	20	79	BB Lip Pin	10
30-1	Recoil Spring Washer	20	80	Valve	150
31	Recoil Spring Guide	150	81	Magazine Case	400
32	Front Chasis	300	82	Follower	30
33	Front Chasis Screw	10	83	Follower Lever	20
34	Knocker	100	84	Follower Lever Spring	15
35	Knocker Spring	30	85	Follower Spring	50
36	Sear Sleeve	40	86	O-Ring	20
37	Sear	60	87	Magazine Bottom	180
38	Hammer	150	88	Filling Valve	70
39	Hammer Strut Pin	10	89	O-Ring	10
40	Hammer Strut	50	90	Washer	10
41	Hammer Sleeve	50	91	Magazine Base Screw	20
42	Chassis Cover	80	CM-1	FOLLOWER SPRING	50
43	Chassis Cover Screw	10	CM-2	FOLLOWER SPRING RETAINER	80
44	Disconnecter	80	CM-3	MAGAZINE CASE	400
45	Knocker Lock	100	CM-4	SPRING RATAINER SCREW	10
46	Knocker Lock Spring	20	CM-8	MAGAZINE BOTTOM CAP	100
47	Plunger Guide	120	CM-9	FILTER	30
48	Slide Stop Plunger	50	CM-10	CARTRIDGE STAB	100
49	Plunger Spring	15	CM-11	VALVE	200
50	Safety Plunger	50	CM-13	VALVE O RING	20

1911 MANUAL

20140703

KJWORKS

www.kjworks.com.tw